



Evergreen Point Road Estate

3263 EVERGREEN POINT RD, MEDINA, WA 98039



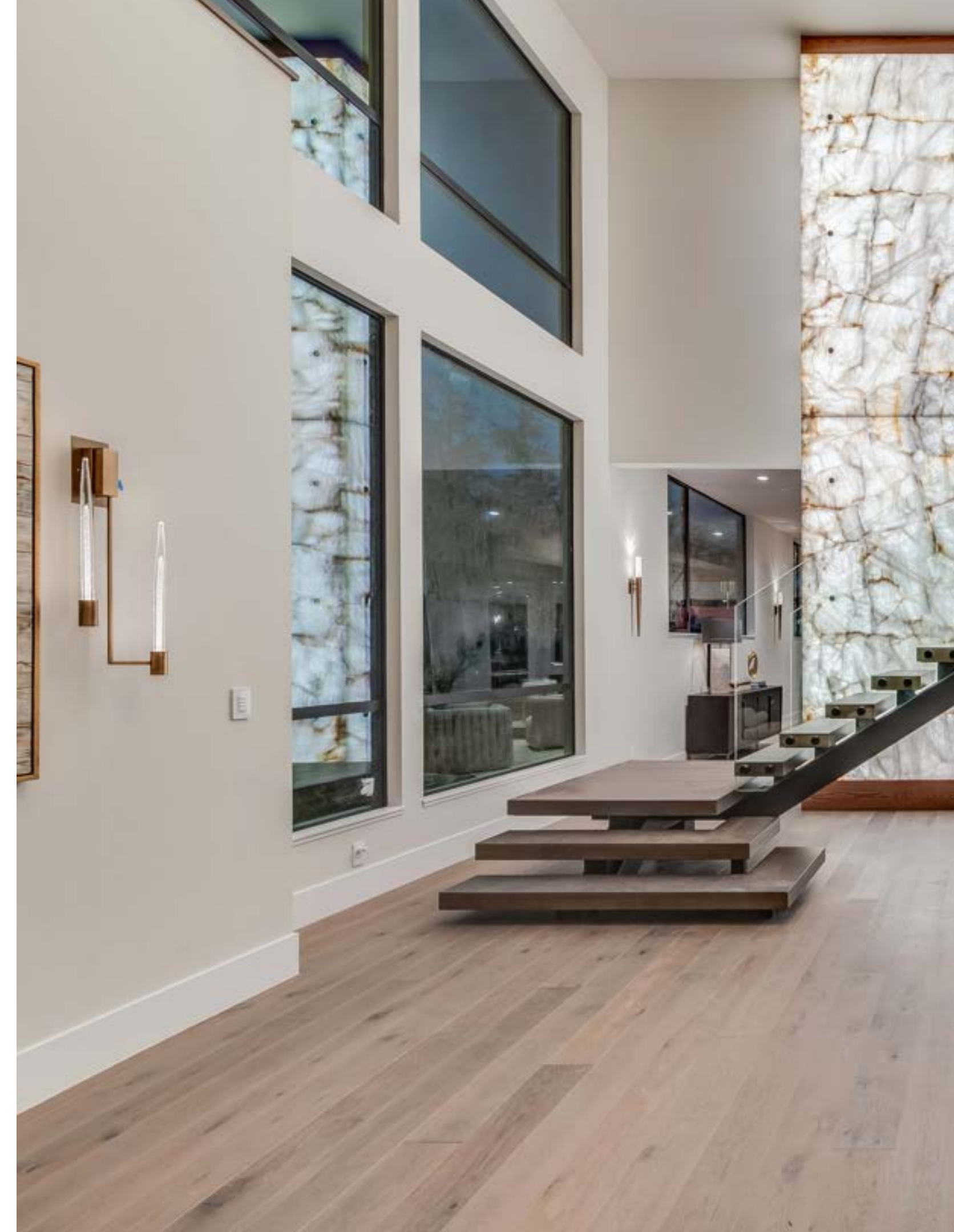
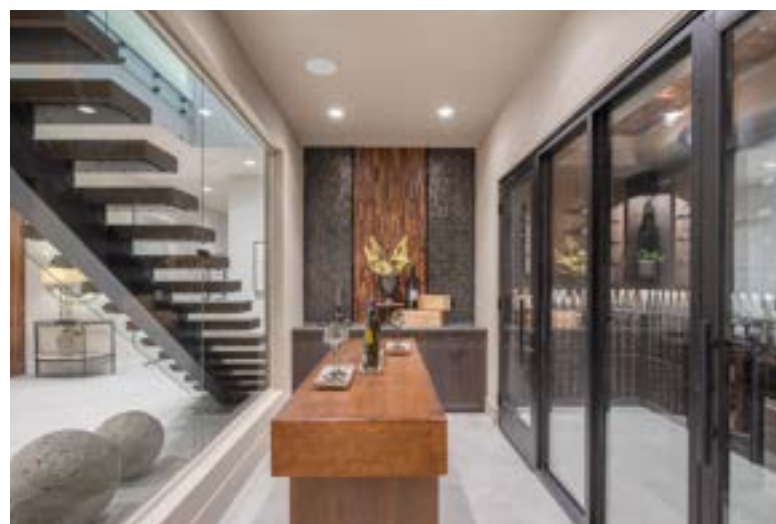
Experience the height of luxury in Medina with this exquisite newly constructed home by McCullough Architects, LH Design, & Hewitt Construction. Part of an enclave of three gated residences at the end of a private lane on Medina's coveted Evergreen Point, this prestigious 12,170 sq. ft. estate sits proudly on .79 acres with stunning views of Lake Washington, Seattle and the Olympics throughout. Designed as the ultimate gathering space for entertaining, it comfortably accommodates over 100 guests and showcases natural stone, 6 beds, 10 bathrooms, 6 fireplaces, an elevator, sauna, theater, wine room & tasting bar, two primary suites, 4-car garage, and seamless transitions from indoor to heated outdoor living. Shared waterfront, dock and moorage. MLS# 2271305

Property Highlights

- 34,342 Sq. Ft. Lot
- 12,170 Sq. Ft. House
- 6 Bedrooms
- 10 Bathrooms
- 4 Car Garage
- Waterfall Wall Entry
- Wine Room
- Generator
- Gated Entry
- Electric Car Charger
- Smart Technology
- 32 Ft. Waterfront, Dock & Moorage

Contact Broker for Pricing





Presented by *Luxury Custom Homes*

Medina Estate

New Construction




W COLLECTION
WINDERMERE
MedinaEvergreenPtRdEstate.com

David Martin
425-894-4516
davidmartin@windermere.com
Windermere/East, Inc. | Bellevue South

